

FIRST SHIELD™ Trio

- For dogs and puppies 2.5 to 20 lbs, over 7 weeks of age
- For dogs and puppies 21 to 55 lbs, over 7 weeks of age
- For dogs 56 to 95 lbs
- For dogs over 95 lbs

- Repels and kills fleas, ticks, and mosquitoes for one month
- Kills 4 species of ticks (*Rhipicephalus* spp, *Dermacentor variabilis*, *Ixodes* spp, *Amblyomma maculatum*), 3 types of mosquitoes (*Culex* spp, *Ochlerotatus* spp, *Aedes* spp), and all stages of fleas
- Kills fleas in 6 hours
- Repels and kills ticks that may cause Lyme disease, Rocky Mountain Spotted fever, babesiosis, ehrlichiosis, bartonellosis, hepatozoonosis, and anaplasmosis
- Easy, spot-on topical application
- Remains effective after bathing and swimming
- Performance guaranteed or your money back
- Only available from licensed veterinarians

After application, FirstShield Trio spreads naturally over the dog's body to provide full body protection against fleas, ticks and mosquitoes.

ACTIVE INGREDIENTS:

Dinotefuran.....4.95%

Pyriproxyfen.....0.44%

Permethrin.....36.08%

OTHER INGREDIENTS... 58.53%

TOTAL100.00%



DO NOT USE ON CATS

KEEP OUT OF REACH OF CHILDREN

WARNING: See directions for use, precautionary statements, first aid and ingredients.

FOR ADDITIONAL INFORMATION, PLEASE CONTACT US AT 1-877-872-3744

READ ENTIRE LABEL BEFORE EACH USE

USE ONLY ON DOGS OR PUPPIES OVER 7 WEEKS OLD

PRECAUTIONARY STATEMENTS

HAZARDS TO HUMANS AND DOMESTIC ANIMALS

For external use on dogs only. Do not use this product on cats.

Use only on dogs and puppies over the age of 7 weeks (1.6mL and 3.6mL sizes)

WARNING: Causes substantial, but temporary eye injury, harmful if swallowed or absorbed through skin. DO NOT get in eyes or on clothing. Avoid contact with skin. Remove and wash contaminated clothing before reuse. Wash thoroughly with soap and water after handling and before eating, drinking, chewing gum or using tobacco products.

Do not use this product on debilitated, aged, medicated, pregnant or nursing animals, or animals known to be sensitive to pesticide products without first consulting a veterinarian.

Sensitivity, such as slight transitory redness of the skin at the site of application, may occur after using ANY pesticide product for pets. If signs of sensitivity occur, bathe your pet with mild soap or shampoo and rinse with large amounts of water. If signs of individual animal sensitivity occur and persist, contact your veterinarian. Have the product container or label with you when calling your veterinarian for advice.



DO NOT USE ON CATS. Due to their unique physiology and inability to metabolize certain compounds, this product must not be used on cats. If applied to a cat, or ingested by a cat that actively grooms a recently treated dog, this product may have serious harmful effects. If this occurs, contact your veterinarian immediately.

FIRST AID

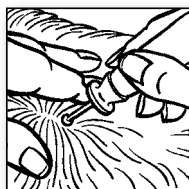
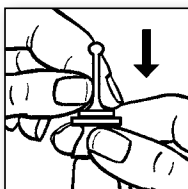
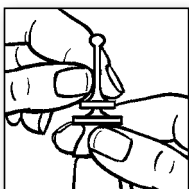
If in eyes:	Hold eye open and rinse slowly and gently with water for 15 – 20 minutes. Remove contact lenses, if present, after the first 5 minutes, then continue rinsing. Call a poison control center, or doctor for treatment advice.
If swallowed:	Call a poison control center, or doctor immediately for treatment advice. Do not induce vomiting unless told to do so by a poison control center or doctor. Have person sip a glass of water if able to swallow. Do not give anything by mouth to an unconscious person.
If on skin:	Take off contaminated clothing. Rinse skin immediately with plenty of water for 15 – 20 minutes. Call a poison control center, doctor, or 1-877-872-3744 or after 6 pm EST call 1-888-426-4435 immediately for treatment advice.
Have the product container or label with you when calling a poison control center or doctor or going for treatment. You may contact 1-877-872-3744 or after 6 pm EST call 1-888-426-4435 for emergency medical information.	

DIRECTIONS FOR USE

It is a violation of Federal law to use this product in a manner inconsistent with its labeling. [Precaución al consumidor: si usted no lee ingles, no use este producto hasta que la etiqueta le haya sido explicada ampliamente.] (To the user: If you cannot speak English, do not use this product until the label has been fully explained to you.)]

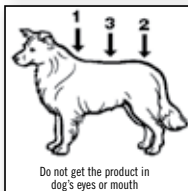
HOW TO APPLY:

- 1. USE ONLY ON DOGS. DO NOT USE ON CATS OR OTHER ANIMALS.**
2. Remove applicator from package.
3. The dog should be standing or in a comfortable position for easy application.
4. Holding the applicator tube upright, place thumb and index finger around the applicator tip under the large disk. With other hand, grasp the stem of applicator tip above smaller disk. Press down firmly on small disk until both disks meet, piercing the seal. See illustration.
5. Using the tip of the applicator, part the hair down to the level of the skin and slowly apply the product. Avoid superficial application to the animal's hair.



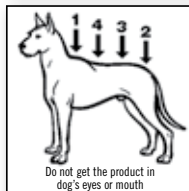
Do not get the product in dog's eyes or mouth

For dogs weighing 2.5 to 20 lbs, apply the product to one spot, as shown in the diagram, onto the skin, squeezing the applicator tube until empty.



Do not get the product in dog's eyes or mouth

For dogs weighing 21 to 55 lbs OR for dogs weighing 56 to 95 lbs, apply the product evenly to three spots along the dog's back, beginning between the shoulder blades and continuing in the order shown in the diagram, squeezing the applicator tube until empty.



Do not get the product in dog's eyes or mouth

For dogs weighing over 95 lbs, apply the product evenly to four spots on the dog's back, beginning between the shoulder blades and continuing in the order shown in the diagram, squeezing the applicator tube until empty.

6. Discard empty applicator tube as outlined in Storage and Disposal.
7. Repeat every month or as recommended by your veterinarian. Do not apply in less than 30 days.
8. For optimum treatment, control and prevention of fleas, flea eggs, flea pupae, flea larvae, ticks, and mosquitoes, year-round treatment is recommended.

STORAGE AND DISPOSAL

Do not contaminate water, food or feed by storage and disposal.

Storage: Store in a cool, dry place. Protect from freezing.

Disposal: If empty, do not reuse the container. Place in trash or offer for recycling if available. If partially filled, call your local solid waste agency for disposal instructions. Never place unused products down any indoor or outdoor drain.

LIMITED WARRANTY AND LIMITATION OF DAMAGES

Seller warrants that the material conforms to the chemical parameters of the US EPA registration and the label. To the extent consistent with applicable law seller makes no warranty, express or implied, other than indicated on the label. Buyer and user assume all risk of use and handling of this material when such use and handling are contrary to the label instructions. To the extent consistent with applicable law any damages arising from a breach of this warranty shall be limited to direct damages and shall not include consequential commercial damages such as loss of profit or values.

Volume varies with size of animal for which package is intended and number of applicators per package. Product may be packaged in 1, 4 or 36 applicators per package. Total volume will correspond to number of applicators.

Manufactured in the USA
for Distribution By:



EPA Reg. No. 83399-6-85581
EPA Est. No. 68669-NC-1

Schuyler, LLC

8000 NE Tillamook Street
Portland, Oregon 97213-0998

SATISFACTION
Guaranteed

Schuyler LLC will provide new product or your money back.